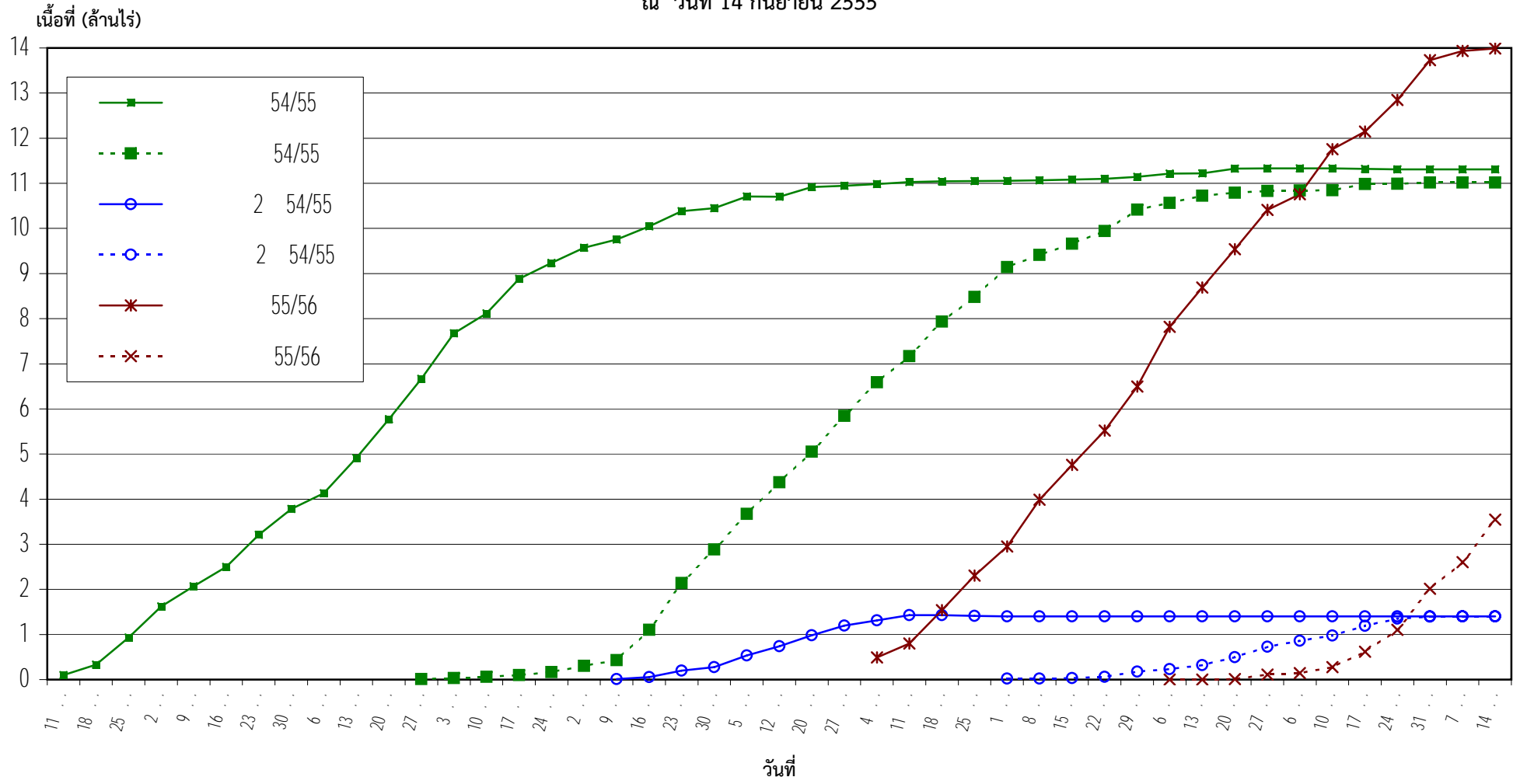
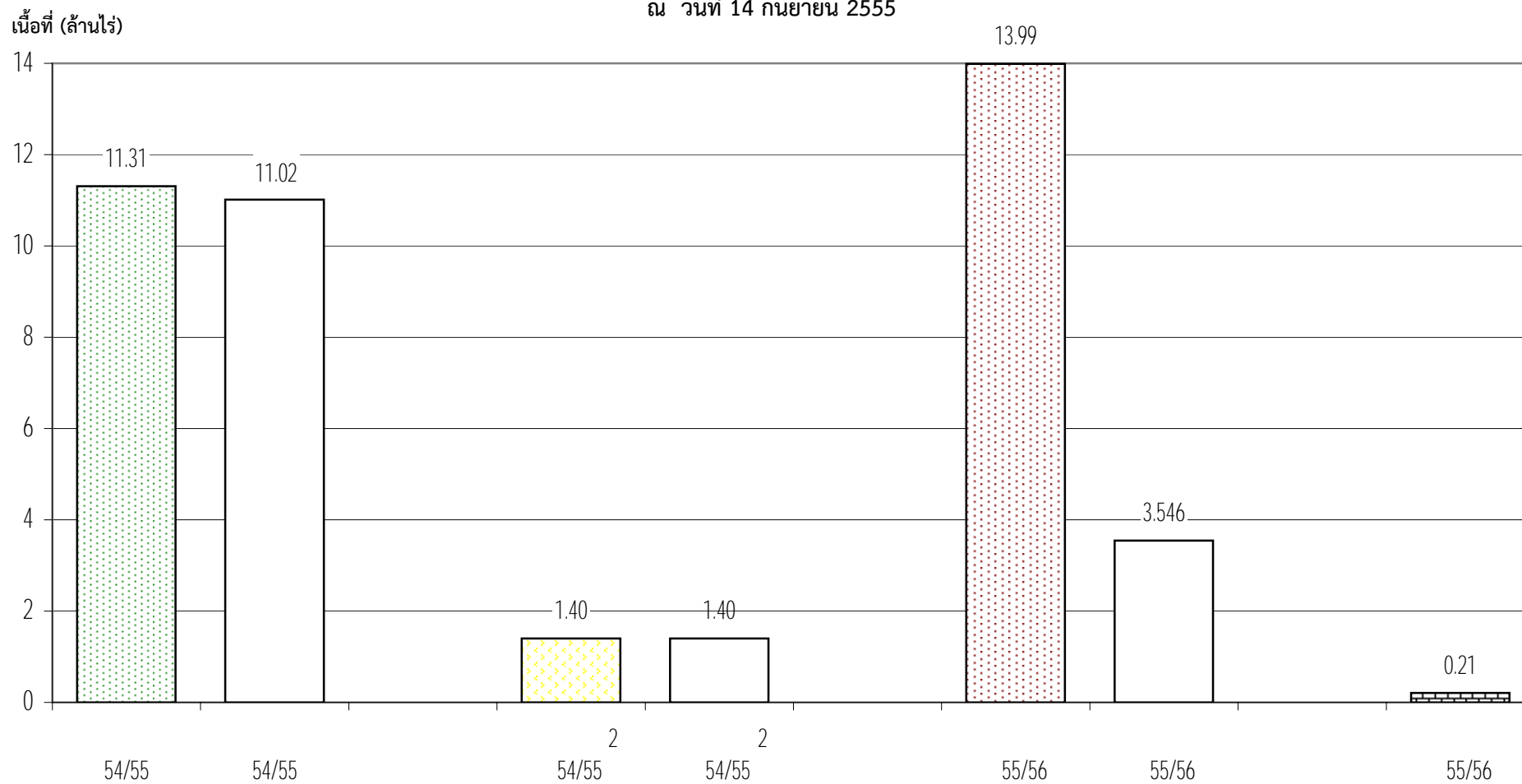


กราฟแสดง เนื้อที่ปลูก และเนื้อที่เก็บเกี่ยวข้าว ในเขตชลประทาน
ปีเพาะปลูก 2554/55 - 2555/56
ณ วันที่ 14 กันยายน 2555



แผนภูมิแสดงเนื้อที่ปลูกสะสม และเนื้อที่เก็บเกี่ยวสะสม ของข้าว
ในเขตชลประทาน ปีเพาะปลูก 2554/55 - 2555/56
ณ วันที่ 14 กันยายน 2555



		()														
		33	34	35	36	37	38	39	40	41	42	43	44	45	46	
		9-15 . 55	16-22 . 55	23-29 . 55	30 . .6 . 55	7-13 . 55	14-20 . 55	21-27 . 55	28 . .6 . 55	7-10 . 55	11-17 . 55	18-24 . 55	25-31 . 55	1-7 . 55	8-14 . 55	
		19,962	15,653	41,026	75,599	4,916	104,846	995								
		1,406,223	1,144,499	684,240	574,953	492,058	429,535	498,952	485,784	483,493	344,062	327,782	292,447	291,922	291,922	
		247,267	281,686	475,912	150,313	158,494	67,439	35,429	14,163	2,291	139,431	5,670	24,835	525	0	
2		1,364,055	1,339,713	1,219,399	1,168,762	1,077,503	904,503	669,536	535,452	424,282	209,912	48,522	2,212			
		10,404	24,342	120,314	50,637	91,259	173,000	234,967	134,084	111,170	214,370	161,390	46,310	2,212		
		773,487	759,947	974,693	1,322,444	873,896	847,592	874,181	347,507	995,137	391,312	700,584	884,230	202,483	54,352	
		3,985,799	4,759,286	5,519,233	6,493,026	7,815,220	8,677,749	9,426,099	10,268,767	10,482,832	11,136,802	11,041,058	10,831,293	11,129,313	10,386,875	
		23,820			900	250	11,367	99,242	31,513	133,442	341,167	487,056	910,349	586,210	944,921	
													18,780	13,636	174,896	
														18,780	32,416	
		7,037,568	7,549,526	8,019,098	8,438,591	9,634,784	10,263,593	10,964,225	11,469,763	11,637,510	12,385,744	12,071,478	12,107,446	12,028,962	11,656,134	
		281,491	306,028	596,226	201,850	250,003	251,806	369,638	179,760	246,903	694,968	654,116	981,494	588,947	944,921	
		6,756,077	7,243,498	7,422,872	8,236,741	9,384,781	10,011,787	10,594,587	11,290,003	11,390,607	11,690,776	11,417,362	11,125,952	11,440,015	10,711,213	
		793,449	775,600	1,015,719	1,398,043	878,812	952,438	875,176	347,507	995,137	380,702	690,084	903,010	216,119	229,248	
		7,549,526	8,019,098	8,438,591	9,634,784	10,263,593	10,964,225	11,469,763	11,637,510	12,385,744	12,071,478	12,107,446	12,028,962	11,656,134	10,940,461	
- ()		653		200												
		123,771	108,630	84,154	64,246	64,158	64,070	64,070	46,147	46,147	1,552	1,570	1,570	1,570	1,570	
		8,702	15,794	24,476	20,108	88	88		17,923		44,595					
- ()		28,323	-10,366	107,198	9,260	15,814	14,070	9,609	10,970	4,622	939	14,752	54,818	3,787	3,776	
		31,270	59,593	49,227	156,425	165,685	181,304	195,274	197,148	207,846	212,281	212,010	222,784	210,325	203,610	
						195	100	7,735	272	187	1,210	3,978	67,277	10,502		
()		905,663	906,750	907,956	923,163	922,782	1,211,236	933,007	932,992	935,478	935,505	932,760	931,415	991,144	991,514	
		1,382,378	1,368,916	1,358,178	1,365,284	1,368,858	1,230,694	1,373,148	1,374,740	1,375,048	1,373,721	1,373,717	1,373,146	1,370,812	1,371,162	
		995,050	981,554	984,764	986,461	972,923	924,905	979,499	978,217	978,612	979,259	973,333	973,317	951,517	951,592	
		490,422	491,571	492,772	500,364	467,901	468,570	467,390	481,859	481,976	481,343	481,348	481,336	481,372	481,372	
		290,159	290,835	298,967	298,368	250,340	247,740	251,380	265,952	265,952	265,452	265,452	265,442	265,424	265,424	
		234,274	234,504	241,385	241,652	241,697	172,128	255,356	259,414	261,365	262,843	262,843	262,625	262,685	262,715	
		4,297,946	4,274,130	4,284,022	4,315,292	4,224,501	4,255,273	4,259,780	4,293,174	4,298,431	4,298,123	4,289,453	4,287,281	4,322,954	4,323,779	
		11,494,209	12,031,489	12,451,085	12,963,392	14,180,007	14,733,751	15,478,942	15,998,496	16,184,949	16,942,790	16,584,391	16,625,231	16,595,415	16,194,770	
		290,193	321,822	620,702	221,958	250,091	252,089	369,738	205,418	247,175	739,750	655,326	985,472	656,224	955,423	
		11,204,016	11,709,667	11,830,383	12,741,434	13,929,916	14,481,662	15,109,204	15,793,078	15,937,774	16,203,040	15,929,065	15,639,759	15,939,191	15,239,347	
		827,473	741,418	1,133,009	1,438,573	803,835	997,280	889,292	391,871	1,005,016	381,351	696,166	955,656	255,579	233,849	
		12,031,489	12,451,085	12,963,392	14,180,007	14,733,751	15,478,942	15,998,496	16,184,949	16,942,790	16,584,391	16,625,231	16,595,415	16,194,770	15,473,196	