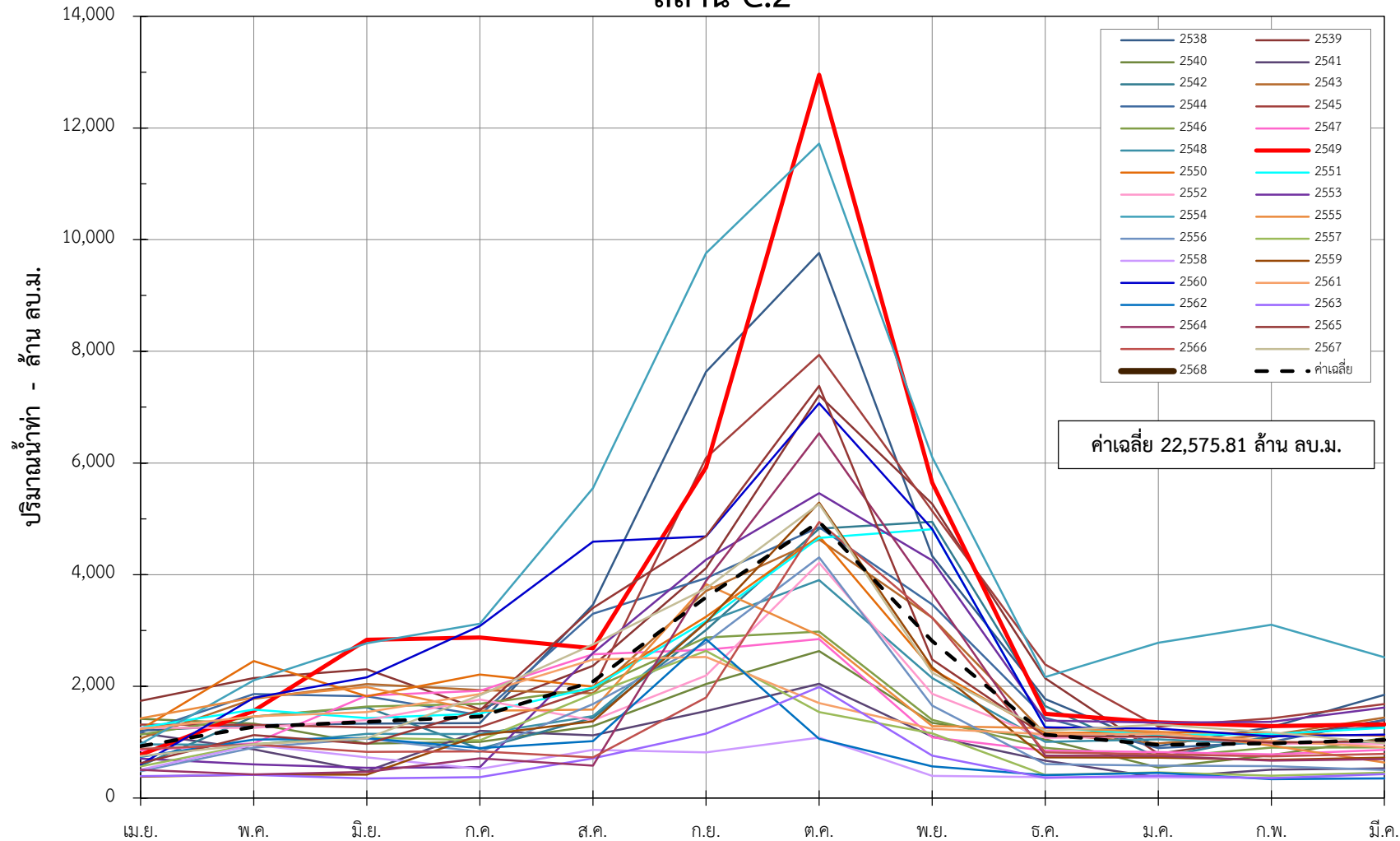


ข้อมูลปริมาณน้ำทำย้อนหลัง 30 ปี สถานี C.2 ค่ายจิรประวัติ อ.เมือง จ.นครสวรรค์

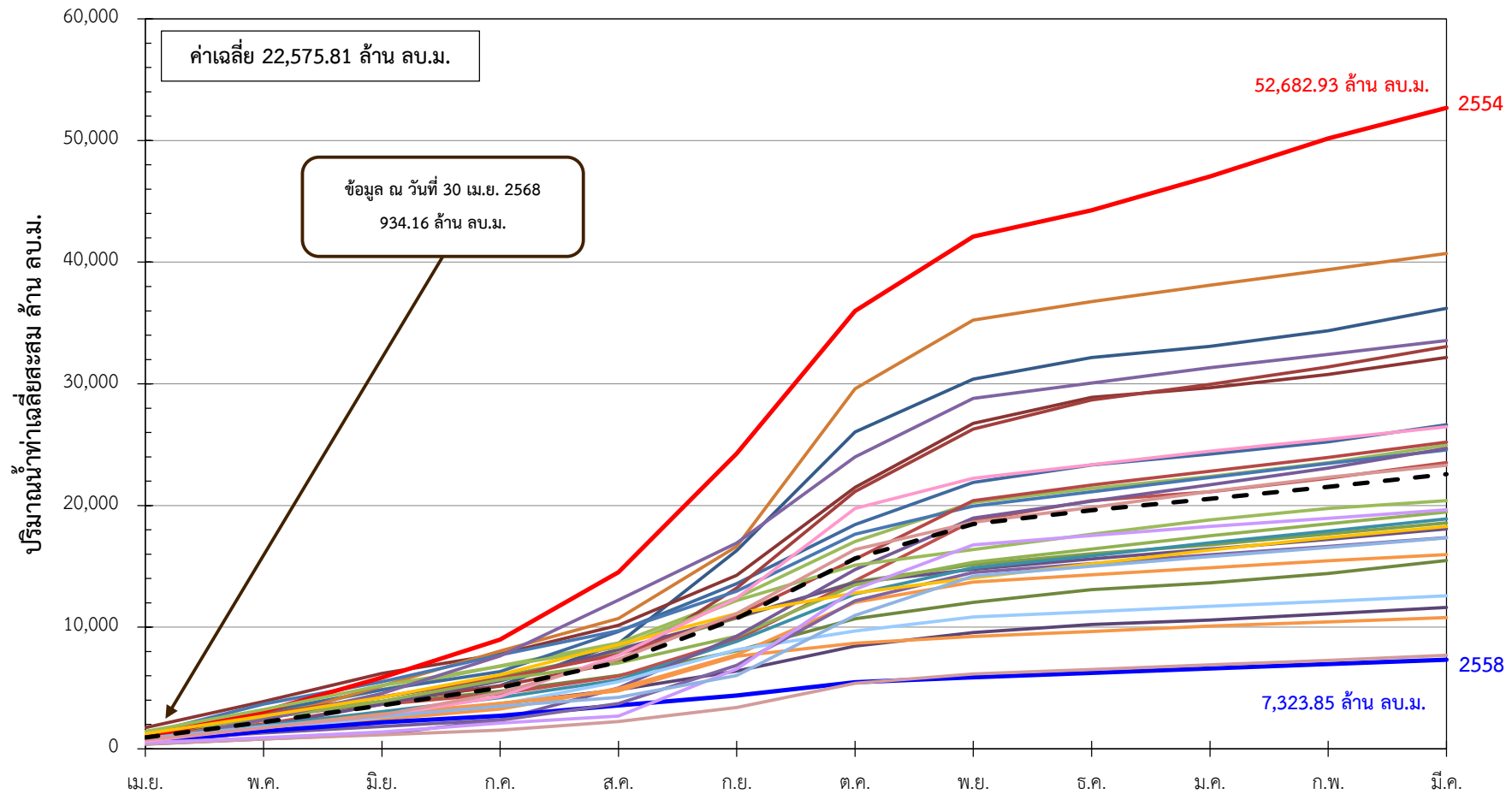
| พ.ศ.      | เม.ย.    | พ.ค.     | มิ.ย.    | ก.ค.     | ส.ค.     | ก.ย.     | ต.ค.      | พ.ย.     | ธ.ค.     | ม.ค.     | ก.พ.     | มี.ค.    | รวม<br>(ล้าน ลบ.ม.) |
|-----------|----------|----------|----------|----------|----------|----------|-----------|----------|----------|----------|----------|----------|---------------------|
| 2538      | 1,209.36 | 1,306.25 | 1,334.85 | 1,341.52 | 3,461.43 | 7,634.65 | 9,761.29  | 4,335.47 | 1,772.89 | 930.23   | 1,271.89 | 1,846.42 | 36,206.28           |
| 2539      | 1,740.27 | 2,148.91 | 2,306.79 | 1,587.05 | 2,369.17 | 4,117.63 | 7,211.42  | 5,268.04 | 2,146.43 | 793.19   | 1,086.77 | 1,392.40 | 32,168.09           |
| 2540      | 1,417.44 | 1,332.82 | 974.83   | 1,004.81 | 1,290.26 | 2,039.35 | 2,631.70  | 1,348.67 | 1,052.13 | 546.04   | 769.51   | 1,072.92 | 15,480.48           |
| 2541      | 1,162.44 | 872.67   | 482.45   | 1,202.53 | 1,123.57 | 1,556.42 | 2,046.24  | 1,101.52 | 667.97   | 369.65   | 506.69   | 530.22   | 11,622.37           |
| 2542      | 579.51   | 1,457.61 | 1,622.44 | 879.09   | 1,435.11 | 3,009.04 | 4,825.38  | 4,946.48 | 1,646.27 | 724.76   | 1,111.73 | 1,289.58 | 23,527.01           |
| 2543      | 1,068.35 | 1,776.50 | 2,039.67 | 1,934.49 | 1,874.24 | 3,709.32 | 4,629.81  | 3,228.33 | 1,149.76 | 979.30   | 1,130.45 | 1,438.72 | 24,958.94           |
| 2544      | 1,177.05 | 1,860.43 | 1,819.55 | 1,486.92 | 3,299.18 | 3,937.81 | 4,849.92  | 3,466.88 | 1,437.36 | 894.79   | 1,007.80 | 1,401.75 | 26,639.41           |
| 2545      | 1,314.56 | 1,311.49 | 1,264.76 | 1,270.83 | 1,952.51 | 6,092.21 | 7,936.02  | 5,143.02 | 2,390.41 | 1,279.81 | 1,426.37 | 1,681.36 | 33,063.38           |
| 2546      | 1,137.86 | 1,460.21 | 1,637.48 | 1,685.46 | 1,961.55 | 2,874.05 | 2,980.89  | 1,399.78 | 898.95   | 727.39   | 903.27   | 907.89   | 18,574.79           |
| 2547      | 855.21   | 977.27   | 1,834.71 | 1,922.23 | 2,572.79 | 2,655.98 | 2,846.98  | 1,089.00 | 850.39   | 824.06   | 782.09   | 864.79   | 18,075.51           |
| 2548      | 960.62   | 953.48   | 1,150.34 | 1,145.23 | 1,466.46 | 3,146.75 | 3,902.61  | 2,146.93 | 1,004.48 | 1,051.11 | 967.92   | 1,003.02 | 18,898.95           |
| 2549      | 774.14   | 1,559.87 | 2,832.54 | 2,874.40 | 2,682.24 | 5,922.39 | 12,952.40 | 5,647.55 | 1,509.62 | 1,355.62 | 1,288.22 | 1,319.93 | 40,718.92           |
| 2550      | 1,229.63 | 2,453.76 | 1,822.77 | 2,211.29 | 1,997.64 | 3,245.19 | 4,690.96  | 2,304.53 | 1,163.46 | 1,179.81 | 1,152.54 | 1,116.21 | 24,567.78           |
| 2551      | 1,261.83 | 1,582.76 | 1,432.12 | 1,510.70 | 1,976.36 | 3,171.92 | 4,660.24  | 4,814.04 | 1,270.51 | 1,127.74 | 1,145.23 | 1,257.60 | 25,211.04           |
| 2552      | 1,257.48 | 1,256.77 | 1,397.88 | 1,764.37 | 1,389.85 | 2,192.85 | 4,212.22  | 1,868.66 | 1,079.86 | 1,102.14 | 974.87   | 967.97   | 19,464.94           |
| 2553      | 705.08   | 600.96   | 541.43   | 552.94   | 2,596.82 | 4,266.40 | 5,458.80  | 4,253.65 | 1,386.39 | 1,351.78 | 1,366.09 | 1,621.24 | 24,701.59           |
| 2554      | 967.74   | 2,110.40 | 2,769.77 | 3,122.67 | 5,550.03 | 9,756.46 | 11,719.60 | 6,106.36 | 2,169.02 | 2,782.90 | 3,105.43 | 2,522.54 | 52,682.93           |
| 2555      | 1,426.24 | 1,798.55 | 1,985.78 | 1,561.04 | 1,582.61 | 3,830.80 | 2,908.79  | 1,288.28 | 1,252.81 | 1,191.51 | 938.04   | 636.14   | 20,400.58           |
| 2556      | 478.47   | 901.74   | 1,063.34 | 826.43   | 1,681.45 | 2,782.79 | 4,310.13  | 1,655.20 | 608.10   | 579.21   | 572.83   | 505.70   | 15,965.39           |
| 2557      | 567.95   | 966.88   | 1,083.78 | 1,034.73 | 1,864.21 | 2,634.85 | 1,537.87  | 1,159.49 | 413.11   | 459.98   | 399.99   | 454.97   | 12,577.81           |
| 2558      | 509.10   | 951.78   | 728.25   | 523.41   | 862.88   | 817.42   | 1,081.94  | 395.56   | 373.63   | 368.82   | 360.67   | 350.40   | 7,323.85            |
| 2559      | 382.58   | 420.25   | 420.80   | 1,126.78 | 1,375.37 | 3,141.52 | 5,290.79  | 2,342.65 | 730.05   | 723.01   | 683.60   | 724.26   | 17,361.65           |
| 2560      | 601.03   | 1,794.27 | 2,162.78 | 3,080.33 | 4,590.92 | 4,686.34 | 7,070.03  | 4,821.10 | 1,266.21 | 1,245.11 | 1,106.82 | 1,134.98 | 33,559.93           |
| 2561      | 1,240.01 | 1,462.41 | 1,540.37 | 1,860.92 | 2,480.03 | 2,526.70 | 1,701.96  | 1,238.39 | 1,143.71 | 1,150.57 | 1,024.67 | 909.27   | 18,279.01           |
| 2562      | 735.44   | 1,044.28 | 1,074.36 | 893.38   | 1,020.04 | 2,844.61 | 1,061.48  | 567.01   | 408.59   | 450.18   | 337.84   | 352.94   | 10,790.13           |
| 2563      | 393.78   | 413.18   | 350.27   | 376.49   | 712.58   | 1,153.34 | 1,988.38  | 760.53   | 362.69   | 400.12   | 354.17   | 426.12   | 7,691.65            |
| 2564      | 503.44   | 422.53   | 469.74   | 710.16   | 582.21   | 3,886.43 | 6,533.38  | 3,660.28 | 761.56   | 755.28   | 668.97   | 695.02   | 19,648.98           |
| 2565      | 623.91   | 1,125.70 | 970.42   | 1,569.58 | 3,404.89 | 4,691.63 | 7,380.86  | 2,482.17 | 1,110.88 | 1,099.80 | 991.07   | 1,020.80 | 26,471.71           |
| 2566      | 878.52   | 957.31   | 825.64   | 838.08   | 727.83   | 1,799.45 | 4,944.33  | 3,226.78 | 817.78   | 782.27   | 745.98   | 790.99   | 17,334.95           |
| 2567      | 753.06   | 959.30   | 1,066.78 | 1,841.88 | 2,747.17 | 3,753.30 | 5,266.08  | 2,244.41 | 1,202.00 | 1,317.17 | 1,175.64 | 979.34   | 23,306.14           |
| 2568      | 934.16   |          |          |          |          |          |           |          |          |          |          |          | 934.16              |
| ค่าเฉลี่ย | 930.40   | 1,274.68 | 1,366.89 | 1,457.99 | 2,087.71 | 3,595.92 | 4,946.42  | 2,810.36 | 1,134.90 | 951.44   | 978.57   | 1,040.52 | 22,575.81           |

# กราฟแสดงปริมาณน้ำท่ารายเดือน ปี พ.ศ.2538-2568 แม่น้ำเจ้าพระยา สถานี C.2



จัดทำโดย : ฝ่ายสารสนเทศและพยากรณ์น้ำ ส่วนอุทกวิทยา กรมชลประทาน

## กราฟแสดงปริมาณน้ำท่าเฉลี่ยสะสมรายเดือน สถานี C.2



- |        |        |        |        |        |        |        |        |        |             |        |
|--------|--------|--------|--------|--------|--------|--------|--------|--------|-------------|--------|
| — 2538 | — 2539 | — 2540 | — 2541 | — 2542 | — 2543 | — 2544 | — 2545 | — 2546 | — 2547      | — 2548 |
| — 2549 | — 2550 | — 2551 | — 2552 | — 2553 | — 2554 | — 2555 | — 2556 | — 2557 | — 2558      | — 2559 |
| — 2560 | — 2561 | — 2562 | — 2563 | — 2564 | — 2565 | — 2566 | — 2567 | — 2568 | — ค่าเฉลี่ย |        |

