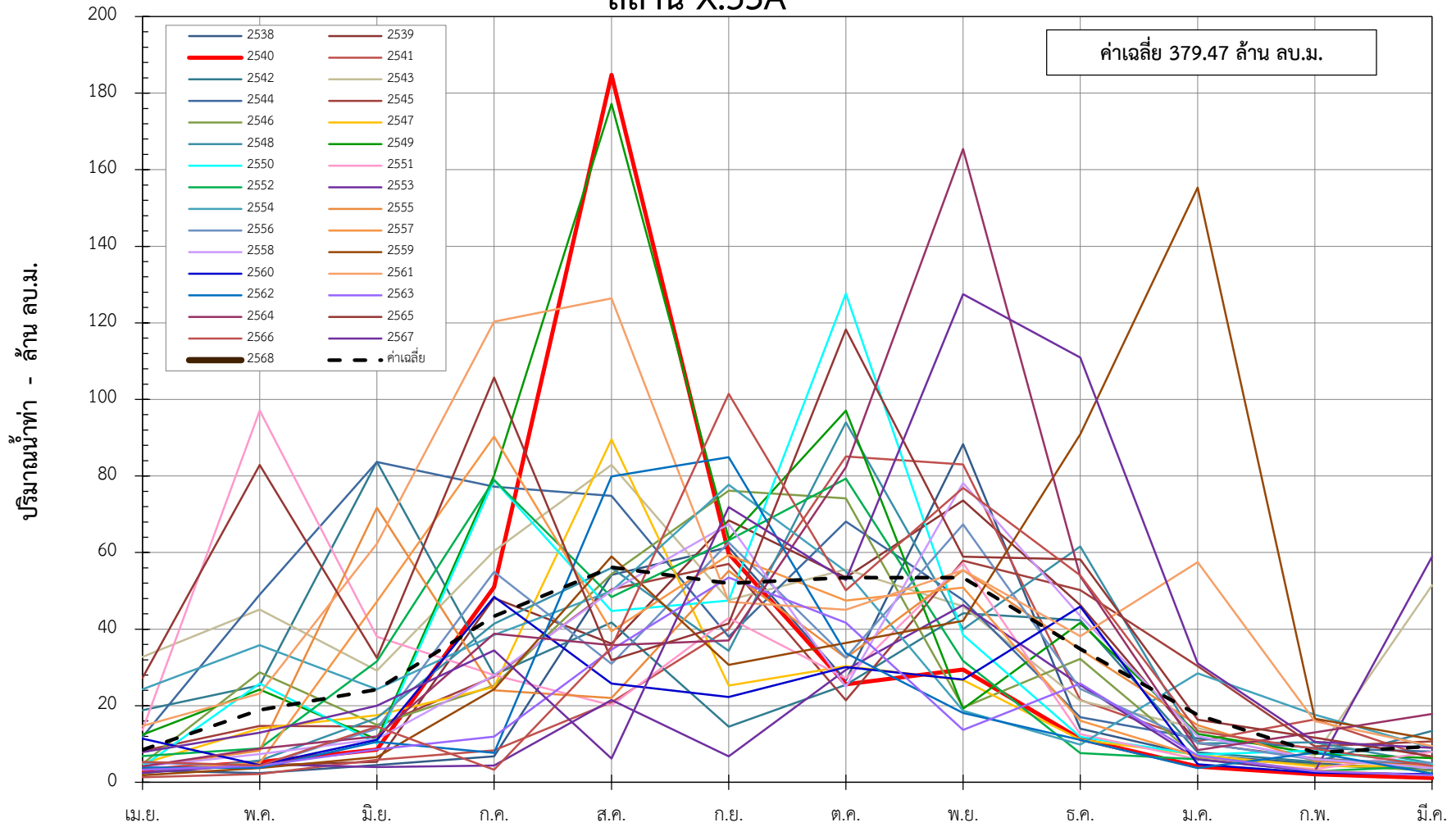


ข้อมูลปริมาณน้ำทำย้อนหลัง 30 ปี สถานี X.53A บ้านวังไผ่ อ.เมือง จ.ชุมพร

| พ.ศ. | เม.ย. | พ.ค. | มิ.ย. | ก.ค. | ส.ค. | ก.ย. | ต.ค. | พ.ย. | ธ.ค. | ม.ค. | ก.พ. | มี.ค. | รวม (ล้าน ลบ.ม.) |
|-----------|-------|-------|-------|--------|--------|--------|--------|--------|--------|--------|-------|-------|---------------------|
| 2538 | 3.07 | 2.40 | 4.47 | 6.77 | 54.14 | 61.37 | 26.63 | 88.32 | 13.97 | 6.95 | 4.94 | 3.17 | 276.20 |
| 2539 | 2.76 | 4.46 | 5.37 | 48.12 | 36.23 | 68.41 | 53.51 | 73.60 | 46.30 | 10.22 | 6.23 | 4.38 | 359.59 |
| 2540 | 3.19 | 5.28 | 8.51 | 50.97 | 184.76 | 59.68 | 25.56 | 29.41 | 11.36 | 4.11 | 2.09 | 1.12 | 386.04 |
| 2541 | 1.31 | 2.15 | 5.88 | 8.31 | 20.87 | 40.03 | 85.10 | 83.01 | 21.51 | 10.75 | 16.42 | 6.18 | 301.52 |
| 2542 | 18.83 | 25.36 | 83.71 | 28.07 | 41.76 | 14.54 | 25.47 | 44.11 | 42.31 | 7.79 | 5.34 | 13.39 | 350.68 |
| 2543 | 32.75 | 45.13 | 29.20 | 60.40 | 82.90 | 47.58 | 55.59 | 45.97 | 21.26 | 14.16 | 7.03 | 51.45 | 493.42 |
| 2544 | 11.82 | 49.01 | 83.65 | 77.23 | 74.82 | 38.05 | 68.11 | 47.56 | 16.97 | 11.47 | 8.90 | 8.01 | 495.60 |
| 2545 | 8.18 | 14.69 | 14.59 | 27.60 | 50.36 | 57.00 | 21.39 | 57.87 | 50.21 | 30.37 | 9.35 | 10.69 | 352.30 |
| 2546 | 4.80 | 28.69 | 14.98 | 25.29 | 54.36 | 76.16 | 74.14 | 19.56 | 32.22 | 6.45 | 4.59 | 3.06 | 344.30 |
| 2547 | 4.86 | 14.04 | 17.51 | 24.85 | 89.55 | 25.24 | 30.34 | 26.68 | 11.11 | 7.18 | 4.17 | 4.31 | 259.84 |
| 2548 | 2.33 | 5.67 | 16.80 | 41.38 | 55.96 | 34.34 | 94.00 | 40.00 | 61.58 | 10.19 | 10.39 | 4.94 | 377.58 |
| 2549 | 12.42 | 24.23 | 11.21 | 80.14 | 177.18 | 63.58 | 97.07 | 19.24 | 41.66 | 12.64 | 7.49 | 6.31 | 553.17 |
| 2550 | 4.11 | 25.77 | 10.16 | 78.88 | 44.72 | 47.43 | 127.61 | 38.50 | 11.88 | 7.22 | 8.27 | 4.74 | 409.29 |
| 2551 | 13.65 | 97.08 | 38.04 | 28.00 | 20.10 | 42.90 | 27.18 | 57.24 | 12.58 | 6.02 | 3.42 | 7.96 | 354.17 |
| 2552 | 6.86 | 8.85 | 31.55 | 78.98 | 48.39 | 63.23 | 79.30 | 31.70 | 7.60 | 5.98 | 2.86 | 4.22 | 369.52 |
| 2553 | 2.43 | 4.68 | 3.98 | 4.39 | 21.49 | 6.78 | 29.38 | 46.31 | 25.38 | 6.01 | 2.87 | 58.91 | 212.61 |
| 2554 | 24.28 | 35.79 | 24.26 | 38.51 | 49.95 | 77.71 | 55.09 | 18.66 | 9.83 | 28.44 | 17.65 | 9.00 | 389.17 |
| 2555 | 4.02 | 8.29 | 71.71 | 24.02 | 21.99 | 55.20 | 32.49 | 55.42 | 34.64 | 14.89 | 5.55 | 4.23 | 332.45 |
| 2556 | 5.04 | 4.29 | 14.03 | 54.93 | 30.94 | 62.60 | 32.58 | 67.36 | 24.39 | 10.34 | 5.93 | 5.03 | 317.46 |
| 2557 | 3.25 | 5.03 | 47.17 | 90.30 | 39.44 | 59.35 | 47.48 | 50.87 | 16.07 | 6.75 | 3.08 | 1.76 | 370.55 |
| 2558 | 4.08 | 7.33 | 11.29 | 27.92 | 50.00 | 67.43 | 24.92 | 78.16 | 43.43 | 12.07 | 6.09 | 3.74 | 336.46 |
| 2559 | 1.84 | 3.74 | 6.55 | 24.28 | 58.98 | 30.69 | 36.38 | 42.17 | 90.87 | 155.33 | 16.58 | 11.21 | 478.62 |
| 2560 | 11.40 | 4.48 | 11.07 | 48.43 | 25.79 | 22.30 | 30.08 | 26.81 | 45.87 | 4.67 | 2.46 | 2.12 | 235.48 |
| 2561 | 14.74 | 23.18 | 62.33 | 120.34 | 126.39 | 47.11 | 45.03 | 55.39 | 38.15 | 57.50 | 15.95 | 9.43 | 615.54 |
| 2562 | 3.84 | 3.80 | 10.55 | 7.69 | 79.90 | 84.91 | 33.72 | 18.09 | 11.09 | 3.70 | 7.77 | 2.27 | 267.33 |
| 2563 | 3.26 | 4.30 | 8.61 | 11.94 | 34.61 | 53.48 | 41.70 | 13.66 | 25.79 | 6.95 | 2.86 | 1.84 | 209.00 |
| 2564 | 4.16 | 8.80 | 11.98 | 38.82 | 35.83 | 37.02 | 82.27 | 165.40 | 53.75 | 8.40 | 13.02 | 17.86 | 477.31 |
| 2565 | 27.31 | 82.87 | 32.49 | 105.74 | 31.88 | 41.44 | 118.25 | 58.93 | 58.19 | 16.37 | 11.66 | 6.76 | 591.89 |
| 2566 | 5.37 | 4.38 | 14.52 | 3.27 | 35.26 | 101.46 | 50.13 | 76.91 | 54.04 | 13.38 | 8.70 | 4.31 | 371.74 |
| 2567 | 7.91 | 12.97 | 20.02 | 34.47 | 6.19 | 71.87 | 52.81 | 127.48 | 110.93 | 31.07 | 10.56 | 9.00 | 495.29 |
| 2568 | 11.89 | | | | | | | | | | | | 11.89 |
| ค่าเฉลี่ย | 8.46 | 18.89 | 24.21 | 43.33 | 56.16 | 51.96 | 53.44 | 53.48 | 34.83 | 17.58 | 7.74 | 9.38 | 379.47 |

กราฟแสดงปริมาณน้ำท่ารายเดือน ปี พ.ศ.2538-2568 แม่น้ำชุมพร

สถานี X.53A



จัดทำโดย : ฝ่ายสารสนเทศและพยากรณ์น้ำ ส่วนอุทกวิทยา กรมชลประทาน

กราฟแสดงปริมาณน้ำท่าเฉลี่ยสะสมรายเดือน สถานี X.53A

