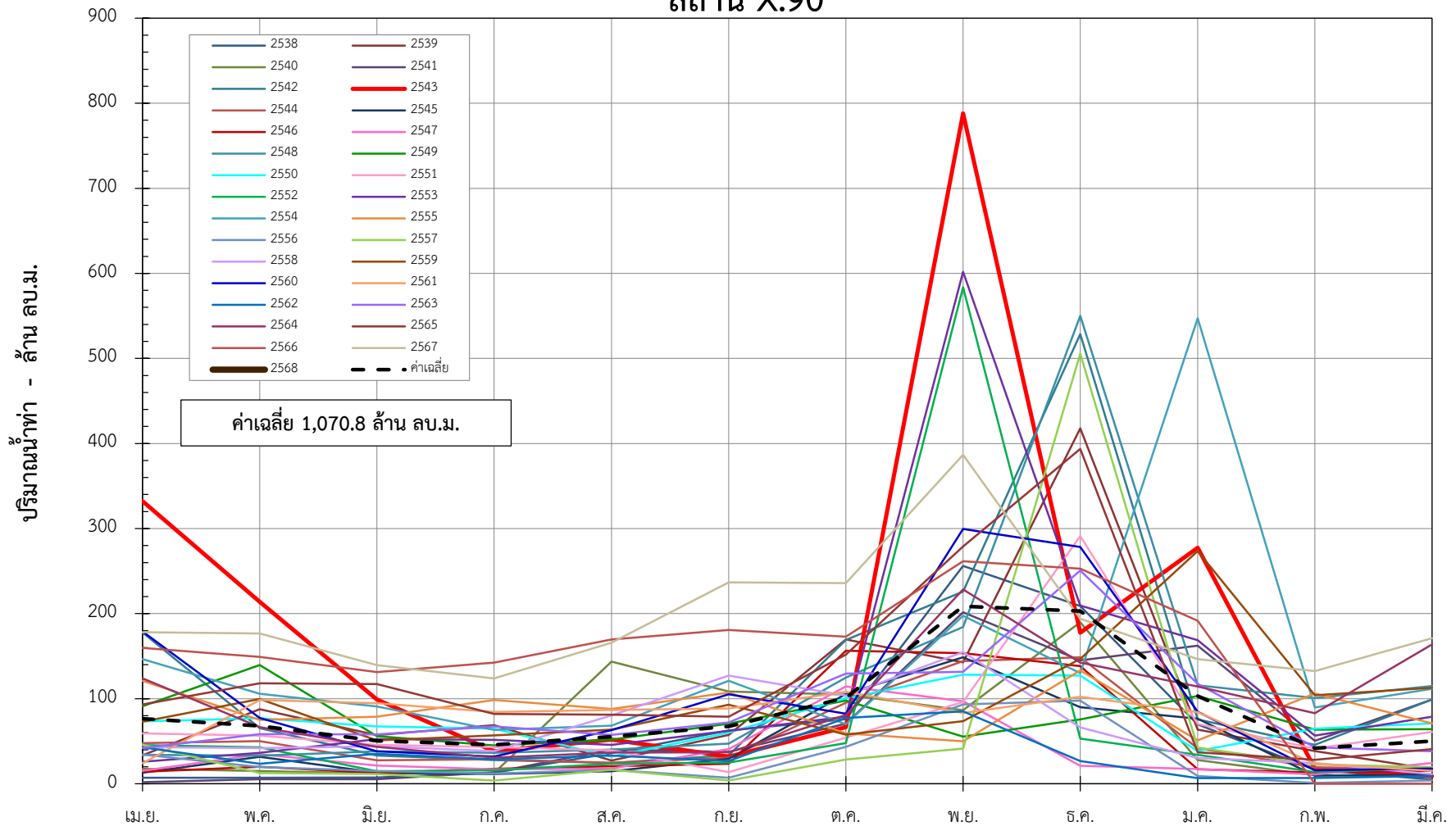


ข้อมูลปริมาณน้ำทำย้อนหลัง 30 ปี สถานี X.90 บ้านบางศาลา อ.หาดใหญ่ จ.สงขลา

| พ.ศ. | เม.ย. | พ.ค. | มิ.ย. | ก.ค. | ส.ค. | ก.ย. | ต.ค. | พ.ย. | ธ.ค. | ม.ค. | ก.พ. | มี.ค. | รวม (ล้าน ลบ.ม.) |
|-----------|--------|--------|--------|--------|--------|--------|--------|--------|--------|--------|--------|--------|---------------------|
| 2538 | 6.94 | 7.06 | 7.41 | 12.99 | 36.05 | 62.62 | 75.96 | 256.06 | 208.87 | 69.63 | 16.36 | 4.91 | 764.87 |
| 2539 | 33.30 | 87.69 | 57.27 | 68.79 | 27.40 | 57.33 | 169.67 | 142.55 | 417.80 | 63.67 | 38.31 | 17.04 | 1,180.82 |
| 2540 | 17.63 | 15.03 | 12.08 | 12.72 | 143.54 | 108.28 | 104.98 | 86.31 | 189.81 | 27.89 | 9.89 | 8.77 | 736.93 |
| 2541 | 1.88 | 5.39 | 5.38 | 13.60 | 40.06 | 37.65 | 70.70 | 201.56 | 144.91 | 162.22 | 50.49 | 99.01 | 832.88 |
| 2542 | 177.89 | 65.23 | 33.04 | 27.88 | 24.44 | 33.53 | 169.17 | 225.80 | 528.58 | 75.51 | 45.60 | 99.04 | 1,505.71 |
| 2543 | 332.21 | 213.92 | 98.89 | 38.21 | 51.91 | 31.89 | 66.45 | 788.02 | 177.52 | 277.43 | 18.00 | 8.92 | 2,103.38 |
| 2544 | 47.90 | 50.23 | 27.49 | 28.75 | 24.54 | 30.40 | 95.19 | 144.02 | 148.63 | 41.53 | 19.36 | 17.48 | 675.51 |
| 2545 | 12.91 | 31.60 | 13.10 | 11.54 | 14.68 | 29.25 | 105.46 | 148.70 | 89.91 | 76.58 | 9.50 | 10.98 | 554.21 |
| 2546 | 13.98 | 20.06 | 12.65 | 17.65 | 20.60 | 23.48 | 156.36 | 153.65 | 138.19 | 17.12 | 13.20 | 15.18 | 602.12 |
| 2547 | 15.12 | 34.71 | 21.45 | 16.93 | 17.77 | 40.75 | 114.41 | 96.92 | 21.20 | 17.25 | 10.96 | 24.38 | 431.85 |
| 2548 | 34.13 | 32.98 | 38.10 | 36.31 | 40.22 | 47.25 | 124.75 | 184.30 | 549.97 | 115.82 | 100.76 | 114.95 | 1,419.53 |
| 2549 | 90.99 | 139.52 | 55.92 | 45.01 | 52.01 | 70.58 | 97.73 | 55.50 | 75.69 | 102.99 | 63.69 | 64.13 | 913.76 |
| 2550 | 73.28 | 77.08 | 67.38 | 64.90 | 31.91 | 60.07 | 100.60 | 128.22 | 127.25 | 38.35 | 64.76 | 71.03 | 904.82 |
| 2551 | 59.22 | 56.56 | 45.74 | 42.99 | 39.33 | 13.65 | 54.16 | 96.06 | 291.23 | 70.46 | 41.44 | 60.84 | 871.69 |
| 2552 | 45.42 | 42.76 | 14.63 | 15.88 | 23.57 | 25.00 | 47.70 | 583.55 | 53.02 | 34.09 | 13.68 | 18.39 | 917.67 |
| 2553 | 25.87 | 36.39 | 52.51 | 51.45 | 45.67 | 62.04 | 78.90 | 601.84 | 209.61 | 168.66 | 56.57 | 78.83 | 1,468.33 |
| 2554 | 146.52 | 105.77 | 90.72 | 63.29 | 68.26 | 121.10 | 70.07 | 197.36 | 130.06 | 547.19 | 89.80 | 111.56 | 1,741.72 |
| 2555 | 120.92 | 74.90 | 78.84 | 98.50 | 87.87 | 107.30 | 59.07 | 49.91 | 133.22 | 50.93 | 106.09 | 70.96 | 1,038.52 |
| 2556 | 34.27 | 19.76 | 14.89 | 12.10 | 16.34 | 7.03 | 43.34 | 93.23 | 97.71 | 9.16 | 0.95 | 3.80 | 352.58 |
| 2557 | 46.05 | 12.49 | 11.58 | 3.73 | 16.52 | 3.74 | 28.55 | 41.34 | 505.59 | 42.58 | 22.46 | 19.50 | 754.13 |
| 2558 | 42.97 | 41.88 | 44.03 | 38.35 | 80.36 | 127.01 | 103.78 | 154.79 | 66.19 | 30.27 | 24.28 | 11.24 | 765.14 |
| 2559 | 72.82 | 99.74 | 50.93 | 56.93 | 63.54 | 92.77 | 57.86 | 73.61 | 146.78 | 273.53 | 103.89 | 112.80 | 1,205.19 |
| 2560 | 179.01 | 77.42 | 38.18 | 32.07 | 63.00 | 105.11 | 82.24 | 299.55 | 278.44 | 84.75 | 15.75 | 17.92 | 1,273.45 |
| 2561 | 23.92 | 98.39 | 94.52 | 84.48 | 86.83 | 88.48 | 108.10 | 83.27 | 102.31 | 83.96 | 23.65 | 15.12 | 893.04 |
| 2562 | 42.69 | 23.52 | 35.12 | 28.65 | 33.01 | 26.75 | 77.27 | 85.07 | 26.57 | 6.61 | 6.88 | 9.05 | 401.19 |
| 2563 | 41.82 | 58.17 | 57.94 | 67.53 | 57.40 | 71.99 | 129.59 | 131.62 | 250.69 | 117.56 | 42.67 | 38.14 | 1,065.12 |
| 2564 | 124.01 | 66.64 | 43.41 | 30.71 | 36.70 | 36.84 | 80.73 | 228.45 | 142.28 | 114.22 | 83.06 | 163.70 | 1,150.75 |
| 2565 | 93.27 | 117.95 | 117.18 | 82.17 | 81.13 | 78.88 | 151.89 | 279.00 | 393.62 | 37.05 | 28.10 | 40.60 | 1,500.84 |
| 2566 | 159.55 | 149.03 | 131.20 | 142.34 | 169.62 | 180.67 | 172.95 | 261.56 | 252.81 | 191.66 | 0.00 | 0.00 | 1,811.38 |
| 2567 | 178.18 | 176.75 | 139.45 | 123.81 | 165.91 | 236.58 | 235.73 | 386.69 | 193.99 | 146.41 | 132.40 | 171.10 | 2,287.01 |
| 2568 | 171.94 | | | | | | | | | | | | 171.94 |
| ค่าเฉลี่ย | 76.49 | 67.95 | 50.37 | 45.68 | 55.34 | 67.27 | 101.11 | 208.62 | 203.08 | 103.17 | 41.75 | 49.98 | 1,070.80 |

กราฟแสดงปริมาณน้ำท่ารายเดือน ปี พ.ศ.2538-2568 แม่น้ำคลองอู่ตะเภา

สถานี X.90



จัดทำโดย : ฝ่ายสารสนเทศและพยากรณ์น้ำ ส่วนอุทกวิทยา กรมชลประทาน

กราฟแสดงปริมาณน้ำท่าเฉลี่ยสะสมรายเดือน สถานี X.90

